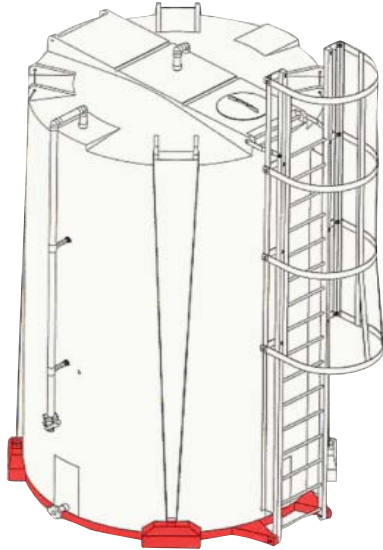


Tank-Saver Platform System

Why is Snyder your #1 choice for engineered tank systems? Because we're constantly developing the innovations that add value to your business, like our Tank-Saver Platform System. If you're using Snyder's 102" vertical tanks or Captor Containment systems, the Tank-Saver system will not only add mobility and versatility, it can even extend your tank's life.



Add Portability to A Complete Tank System

The Tank-Saver Platform System is portable, so it's ideal for both permanent and temporary bulk storage tank installations. With the Tank-Saver, you can ship your entire tank system, even the ladder assembly in one piece on site.

Extend your Tank's Life

The Tank-Saver has a domed top design, so the bottom of your tank is more fully supported. This important feature can extend your tank's life in high cycle rate applications.

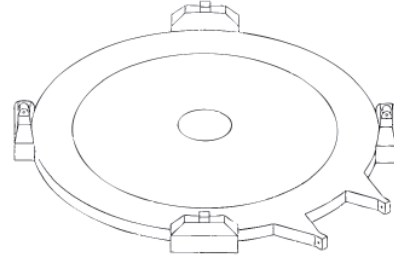
No Drainage Clearance Needed

With the Tank Saver System, you won't even need additional clearance or separation from the floor's surface for draining tanks. The integrated slab crates space required for complete drainage.

Snyder Stability

Finding tank and containment systems as versatile and dependable as Snyder's would be a challenge in itself. Add the innovation of our Tank Saver System, and it's easy to see why Snyder is the first choice in bulk storage solutions.

TANK-SAVER PLATFORM SYSTEM



Single Wall Tanks

Capacity	Diameter	Height
3,000	102"	96"
4,100	102"	130"
4,500	102"	142"
5,000	102"	154"
6,000	102"	188"
7,500	102"	234"

Double Wall Tanks

Capacity	Diameter	Height
2,000	102"	103"
2,500	102"	122"
3,000	102"	142"
3,500	102"	158"
4,000	102"	178"
4,500	102"	197"
5,000	102"	216"

All tank dimensions exclude ladder attachment.

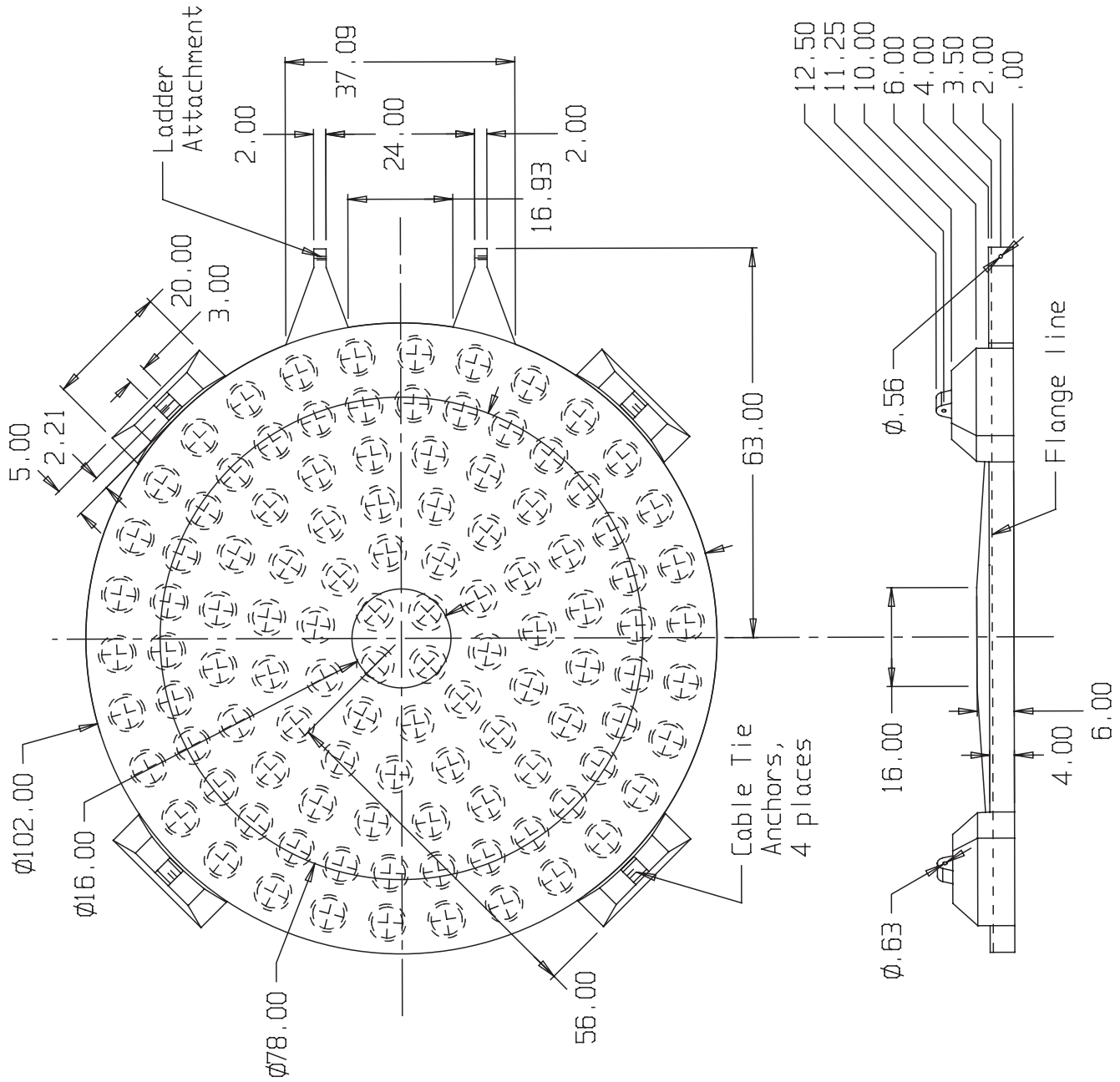
Call your Snyder Representative today to learn more about the Tank-Saver Platform System and other innovative Snyder Products



P.O. Box 4583 • Lincoln, Nebraska • 68504
402-467-5221 • Fax: 402-465-1220 • www.snydernet.com
Email: sales@snydernet.com

Other Manufacturing Locations: Marked Tree, Arkansas • Philippi, West Virginia •
Chowchilla, California • Mancelona, Michigan

SNYDER INDUSTRIES INC.



(all dimensions in inches)

PART# 5900000C999L

REF#: 0000

09/26/03

ϕ 102" TANK BASE, HDLPE/GREY