

MSA250-SE
MSA250-EX
Electrofusion Unit



**EVERY
SECOND COUNTS**



GEORG FISCHER
PIPING SYSTEMS

MSA250-SE, MSA250-EX Electrofusion Unit

MSA250 Fusion Unit Offers

- Barcode Fusion Parameter Input
- Multiple Joint Capability
- Advanced Transformer Technology
- Network and Generator Compatible
- Self Diagnostic System
- Automatic compensation for ambient temperature
- Network or generator input power capability

Applications

The MSA250 can be used to join the following piping systems:

- Fuseal® PPFR and PPNFR (1½" - 12")
- Fuseal Squared® PPFR and PPNFR (1½" x 4" - 8" x 12")
- Fuseal 25/50™ PVDF (1½" - 6")
- PPro-Seal™ PPn (½" - 3")

Electrofusion Process

Electrofusion is defined as the joining process where two plastic parts are fused utilizing electrical heat resistance to form a permanent joint.

A plastic coated copper wire is wound into a "coil" and is then inserted into a fitting socket.

The pipe is then inserted into the fitting socket and an electric current is applied to the coil producing heat that generates sufficient temperatures to melt the surrounding plastic and create a "melt zone," as shown in Figure 1.

Fusion occurs when the joint cools below the melt temperature of the plastic material, leaving a permanent joint that is proven to be as strong as, if not stronger than, the individual components.

The computer simulation seen in Figure 2 shows the heat distribution around the "melt zone" region.

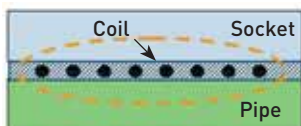


Figure 1

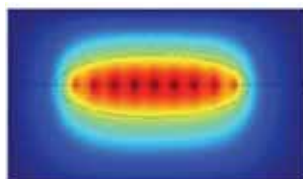


Figure 2



Barcodes also provide the capability to perform program updates for new products in the field.

Fusion Barcodes

All required fusion parameters are programmed into the MSA250 by simply scanning a barcode specific to each sized joint.

Multiple Joint Capability

The MSA250 has the time and labor saving features of multiple joint fusion. Multiple joint capability significantly reduces installation time requirements and contributes directly to your bottom line.

Number of Joints Per Cycle

Size	Fuseal	PPro-Seal	Fuseal 25/50 PVDF
½	n/a	5	n/a
¾	n/a	5	n/a
1	n/a	5	n/a
1½	4	5	4
2	4	5	4
3	4	n/a	4
4	5	n/a	4
6	5	n/a	2
8	2	n/a	n/a
10	2	n/a	n/a
12	2	n/a	n/a



MSA250 Specification

Part Number	MSA250-SE	MSA250-EX
Input Voltage	90-130 VAC Nominal Voltage: 110 V/Generator: 110-120 VAC Nominal Voltage	200-250 VAC Nominal Voltage: 230 V/Generator: 210-230 VAC Nominal Voltage
Input Current	15 Amps	15 Amps
Output Voltage	0 to 45 VAC	0 to 45 VAC
Output Current	0 to 30 Amps	0 to 30 Amps
Power Consumption	max. 1200 W nominal output	max. 1200 W nominal output
Generator Output Performance	2 KVA Sinusoidal unipolar operation) depending on the fitting diameter	2 KVA Sinusoidal unipolar operation) depending on the fitting diameter
Back-up Fuse	10-16 AT depending on the fitting size	10-16 AT depending on the fitting size
Fusion Voltage	3,7-32 VAC galvanically separated	3,7-32 VAC galvanically separated
Protection Type	Protection class 1/IP 65	Protection class 1/IP 65
Operating Temperature	14°F (-10°C) to 113°F (45°C)	14°F (-10°C) to 113°F (45°C)
Operation Time	24%-100% depending on the fitting size, with electronic temperature monitoring of the unit	24%-100% depending on the fitting size, with electronic temperature monitoring of the unit
Duty Cycle	100%	100%
Dimensions	Width: 11 in (280 mm) Depth: 7 7/8 in (200 mm) Height: 13 3/4 in (350 mm) (measured inc. carrying handle)	Width: 11 in (280 mm) Depth: 7 7/8 in (200 mm) Height: 13 3/4 in (350 mm) (measured inc. carrying handle)
Weight	25 lbs (11.5 kg) (with cables)	25 lbs (11.5 kg) (with cables)
Power Cable Length	10 ft. (3 m)	10 ft. (3 m)
Extension Cord Requirement	150 ft (46 m) maximum	150 ft (46 m) maximum

MSA250 Fusion Parameters

Fuseal II (v1.0)

PPro-Seal (v2.0)

Fuseal 25/50 PVDF (v1.0)

Size	Volts	Time (Sec)	# Joints	Size	Volts	Time (Sec)	# Joints	Size	Volts	Time (Sec)	# Joints
1½	6	70	4	½	3.7	60	5	1½	6.7	86	4
2	7.5	80	4	¾	4.2	80	5	2	6.7	99	4
3	14.7	90	4	1	4.8	92	5	3	9.1	112	4
4	16.9	105	5	1½	6.6	96	5	4	12.2	130	4
6	23.0	190	5	2	8.0	110	5	6	17.0	235	2
8	20.7	240	2	3	13.5	90	5				
10	23.7	240	2								
12	23.7	300	2								

The technical data given in this publication implies no warranty of whatever kind and is subject to change without notice. Please consult our Terms and Conditions of Sale.

GF Piping Systems → worldwide at home

Our sales companies and representatives ensure local customer support in over 100 countries.

www.piping.georgfischer.com



George Fischer, Inc.

2882 Dow Avenue, Tustin, CA 92780-7258

Tel. (714) 731-8800, Toll Free (800) 854-4090, Fax (714) 731-6201

e-mail: us.ps@georgfischer.com

www.us.piping.georgfischer.com

Australia

George Fischer Pty Ltd
Kingsgrove NSW 2008
Phone +61(0)2-9554 3977
australia.ps@georgfischer.com
www.georgfischer.com.au

Austria

George Fischer Rohrleitungssysteme GmbH
3130 Herzogenburg
Phone +43(0)2782-856 430
austria.ps@georgfischer.com
www.georgfischer.at

Belgium / Luxembourg

George Fischer NV/SA
1070 Bruxelles/Brüssel
Phone +32(0)2-556 40 20
be.ps@georgfischer.com
www.georgfischer.be

Brazil

George Fischer Ltda
04795-100 São Paulo
Phone +55(0)11-5687 1311
br.ps@georgfischer.com
www.georgfischer.com.br

China

George Fischer Piping Systems Ltd Shanghai
Pudong, Shanghai 201319
Phone +86(0)21-5813 3333
china.ps@georgfischer.com
www.cn.piping.georgfischer.com

Denmark / Iceland

Georg Fischer A/S
2630 Taastrup
Phone +45 (0)70 22 19 75
info.dk.ps@georgfischer.com
www.georgfischer.dk

France

George Fischer S.A.S.
93208 Saint-Denis Cedex 1
Phone +33(0)1-492 21 34 1
fr.ps@georgfischer.com
www.georgfischer.fr

Germany

Georg Fischer GmbH
73095 Albershausen
Phone +49(0)7161-302-0
info.de.ps@georgfischer.com
www.rts.georgfischer.de

Georg Fischer DEKA GmbH
35232 Dautphetal-Mornshausen
Phone +49(0)6468-915-0
deka.ps@georgfischer.com
www.dekapipe.de

Greece

Georg Fischer S.p.A.
10434 Athens
Phone +30(0)1/882 04 91
office@piping-georgfischer.gr

India

Georg Fischer Piping Systems Ltd
400 093 Mumbai
Phone +91(0)22-2821 7749
in.ps@georgfischer.com

Italy

Georg Fischer S.p.A.
20063 Cernusco S/N (MI)
Phone +39 02-921 861
it.ps@georgfischer.com
www.georgfischer.it

Japan

Georg Fischer Ltd
556-0011 Osaka
Phone +81(0)6-6635 2691
jp.ps@georgfischer.com
www.georgfischer.jp

Malaysia

Georg Fischer [M] Sdn. Bhd.
47500 Subang Jaya
Phone +603-8024 7879
conne.kong@georgfischer.com.my

Netherlands

Georg Fischer N.V.
8161 PA Epe
Phone +31(0)578-678 222
nl.ps@georgfischer.com
www.georgfischer.nl

Norway

Georg Fischer AS
1351 Rud
Phone +47 67 18 29 00
no.ps@georgfischer.com
www.georgfischer.no

Poland

Georg Fischer Sp. z o.o.
02-226 Warszawa
Phone +48(0)22-313 10 50
poland.ps@georgfischer.com
www.georgfischer.pl

Romania

Georg Fischer
Rohrleitungssysteme AG
70000 Bucharest - Sector 1
Phone +40(0)21-222 91 36
ro.ps@georgfischer.com

Singapore

George Fischer Pte Ltd
417 845 Singapore
Phone +65(0)67-47 06 11
sgp.ps@georgfischer.com
www.georgfischer.com.sg

Spain / Portugal

Georg Fischer S.A.
28009 Madrid
Phone +34(0)91-781 98 90
es.ps@georgfischer.com
www.georgfischer.es

Sweden / Finland

Georg Fischer AB
12523 Älvsjö-Stockholm
Phone +46(0)8-506 775 00
se.ps@georgfischer.com
www.georgfischer.se

Switzerland

Georg Fischer Rohrleitungssysteme [Schweiz] AG
8201 Schaffhausen
Phone +41(0)52-631 30 26
ch.ps@georgfischer.com
www.piping.georgfischer.ch

United Kingdom / Ireland

George Fischer Sales Limited
Coventry, CV2 2ST
Phone +44(0)2476 535 535
uk.ps@georgfischer.com
www.georgfischer.co.uk